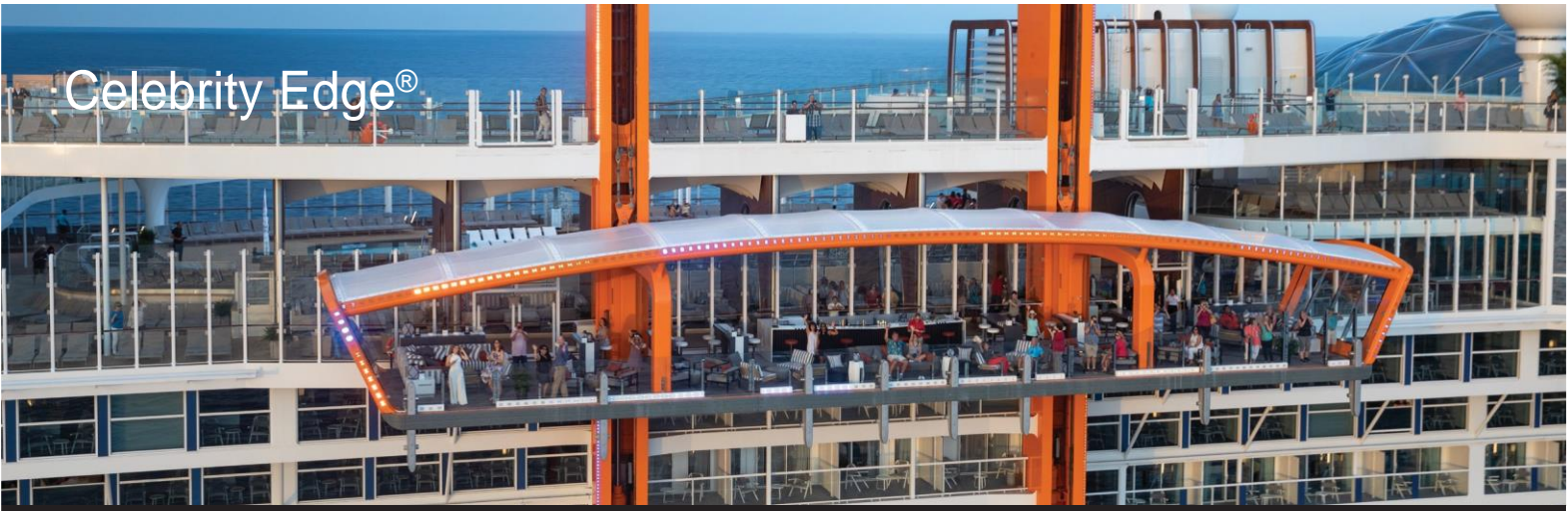


# Celebrity Edge®



## SHIP SPECS



Double Occupancy  
**2,918**

Max Occupancy  
**3,385**



Crew  
**1,320**

Guest Decks  
**14**

Tonnage  
**129,500**

Length  
**1,004 feet**

Beam  
**128 feet**

Draft  
**27 feet**

Electric Current  
**110/220 AC**

Ship's Registry  
**Malta**

Ship Builder  
**STX France**

Maiden Voyage  
**December 9, 2018**

Godmother  
**Malala Yousafzai**



## STATEROOMS

- Edge Stateroom with Infinite Veranda is 23% larger than our spacious Solstice® Series veranda staterooms, and the bathroom space is 10% larger.
- Standard-sized staterooms include our exclusive eXhale™ bedding featuring king-sized Cashmere™ mattresses.
- In-room automation allows guests to control and personalize everything from a simple touch screen, including lighting, shades, temperature, and service.

Total Staterooms  
**1,467**

Verandas  
**81%**

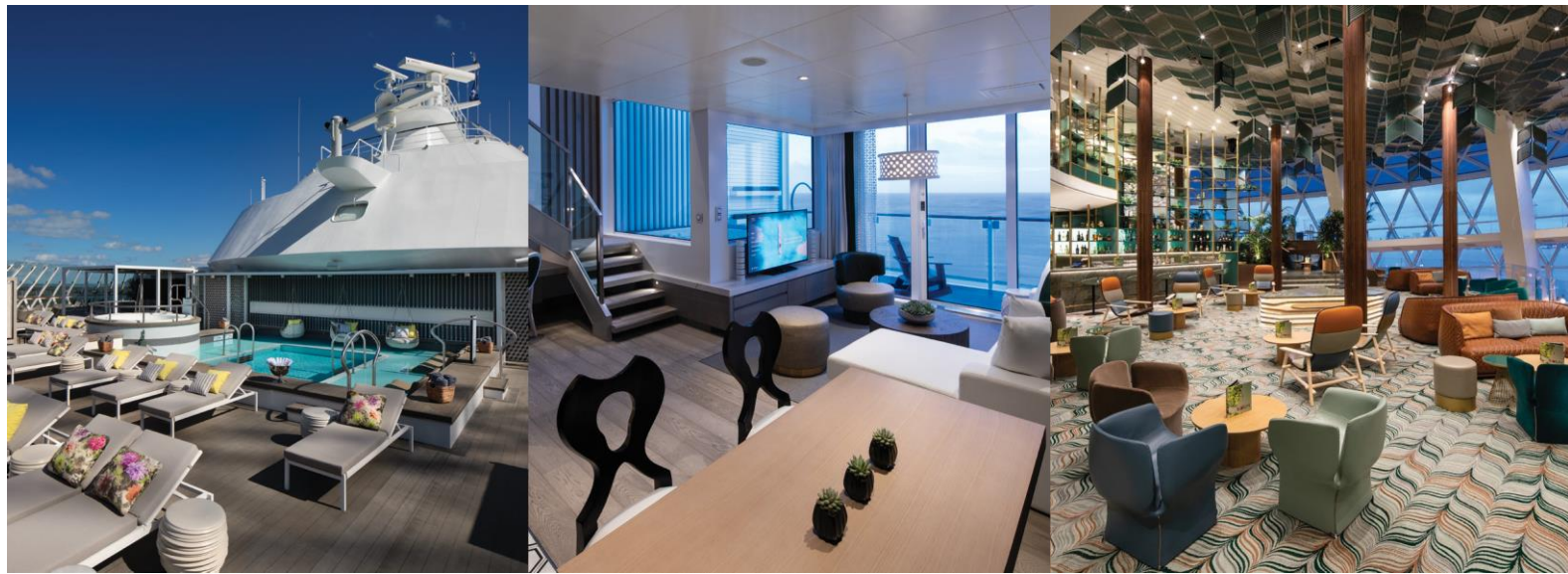
Ocean View  
**10%**

Inside  
**9%**

Accommodates 3 or 4  
**467**

Connecting  
**178**





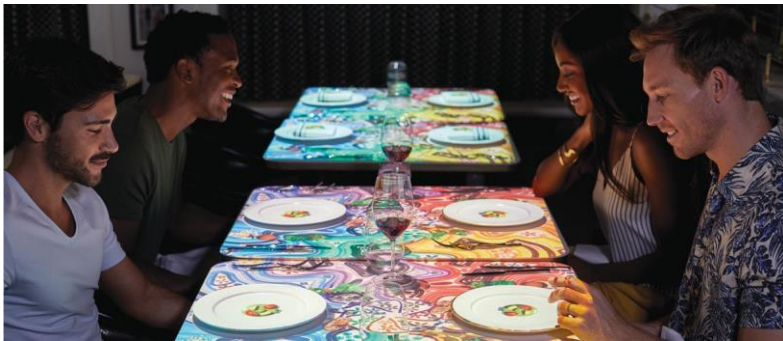
CATEGORY	CODE	QUANTITY	STATEROOM SQ.FT.	VERANDA SQ.FT.
Iconic Suite	IC	2	1,892	689
Penthouse Suite	PS	2	1,378	197
Edge Villa	EV	6	739	211
Royal Suite	RS	4	687	72
Celebrity Suite	CS	16	401	100
Sky Suite	S1, S2, S3	146	313	163
AquaClass®	A1, A2	126	202	42
Concierge Class	C1, C2, C3	276	202	42
Edge Stateroom with Infinite Veranda	E1, E2, E3, E4, E5	500	202	42
Edge Single Stateroom with Infinite Veranda	ES	16	131	45
Sunset Veranda	SV	36	228	89
Deluxe Ocean View with Veranda	1A, 1B	58	202	40
Panoramic Ocean View	IO	28	212	
Deluxe Ocean View	6	18	242	
Ocean View	7, 8	102	200	
Deluxe Inside	9, 10, 11	114	202	
Inside	12	17	181	

**WHEELCHAIR ACCESSIBLE (included in above)**

Sky Suite	S2	2	418	99
AquaClass	A1	2	304	65
Concierge Class	C2	6	304	65
Edge Stateroom with Infinite Veranda	E1	8	304	65
Deluxe Ocean View	6	4	348	
Deluxe Inside	9	3	231	

\* Celebrity Family Suite combines a Sky Suite with a Sunset Veranda, available seasonally. Sky Family Suite combines a Sky Suite with a Sunset Veranda, available seasonally.





## EAT. DRINK. MEET.

- Globally inspired meals with locally sourced ingredients
- Menus by a Michelin-starred chef; meals prepared on board
- Perfect pairings, plus bars and lounges for every mood
- Unexpected spaces like Eden and the Magic Carpet
- Meeting and presentation venues—standard AV included

### MAIN DINING

**Luminae at The Retreat®.** Extraordinary service and cuisine for guests of The Retreat  
**Blu.** Clean cuisine prepared with imagination, exclusive for AquaClass® guests  
**Cyprus.** Our Greek heritage, focusing on seafood, in a stunning atmosphere  
**Cosmopolitan.** New American favorites prepared with exciting global influences  
**Normandie.** French cuisine and wine in an atmosphere evoking springtime in Paris  
**Tuscan.** Authentic fare in a delicious ambience inspired by Italian fashion and film  
**24-hour room service**

MEALS	COVER*	DECK	CAPACITY	PRIVATE
B, L, D	\$0	12	172	Yes
B, D	\$0	5	126 in, 22 out	Yes
B, L, D	\$0	4	342	Part
B, L, D	\$0	4	346	Part
D	\$0	3	346	Part
D	\$0	3	344	Part
B, L, D	-			

### SPECIALTY DINING (available for buyouts)

**Eden Restaurant.** Experiential dishes from an open-air kitchen  
**Fine Cut Steakhouse.** Cuisine that sizzles—literally—with service elevated to an art  
**Le Grand Bistro.** The flavors and ambience of a French boulangerie-patisserie  
**Magic Carpet.** Alfresco extension of Raw on 5, flying over the open sea  
**Raw on 5.** Intimate eatery with abundant fresh fish, oysters, crab, and lobster  
**Rooftop Garden Grill.** Backyard barbecue with ocean views under the sun or stars

MEALS	COVER*	DECK	CAPACITY	PRIVATE
D	\$55	4	84	Yes
D	\$55	5	88 in, 32 out	Yes
B, L, D	\$10B, \$20L, \$55D*	4	72 in, 18 out	Yes
L, D	à la carte	5	79	Yes
L, D	à la carte	5	76	Yes
L, D	\$25L, \$45D	15	56	Yes

### COMPLIMENTARY DINING

**Eden Café & Bar.** Food and drink in the grandest space we've ever designed  
**Grand Plaza Café.** Freshly baked sweet and savory snacks and mini sandwiches  
**Mast Grill.** Poolside spot for a juicy burger and refreshing beverage  
**Oceanview Café.** A world of pasta, pizza, stir-fry, sushi, salad, desserts  
**Spa Café and Juice Bar.** A fruitful blend of offerings both flavorful and good for you

MEALS	COVER*	DECK	CAPACITY	PRIVATE
B, L	\$0	5	189 in, 52 out	No
B, L	\$0	3	40	No
L	\$0	14	68	No
B, L, D	\$0	14	712 in, 114 out	No
B, L	\$0	14	40	No

### BARS AND LOUNGES

**Café al Bacio.** Freshly baked snacks, artisanal cupcakes, dessert cocktails, rich coffees  
**Casino Bar.** Refreshments amid all the blackjack, roulette, baccarat, poker, and slots  
**The Club.** Hub of activities and social interaction, morning, noon, and night  
**Martini Bar.** Creative cocktails by talented bartenders who put on a great show  
**Pool Bar.** Sunny-side spot for refreshing beverages and snacks  
**The Retreat Lounge.** Sunroom with gourmet bites and beverages for guests of The Retreat  
**The Retreat Pool Bar.** Luxurious libations in an exclusive sanctuary for guests of The Retreat  
**Il Secondo al Bacio.** Popular beverage station  
**Sunset Bar.** Casual atmosphere to hear live guitar as the sun sets in the ship's wake

DECK	CAPACITY	PRIVATE
4	91	Part
4	16	Part
4, 5	261	Yes
3	120	Part
14	38	Part
15	125	No
16	28	No
14	54	Part
15	86	Part

### ONBOARD VENUES\*

**Destination Gateway.** State-of-the-art multipurpose facility with AV systems and 3,929 sq. ft. for activities  
**Eden.** Three-level environment with 11,840 sq. ft. weaving performance art with culinary treats for social magic  
**The Meeting Place.** Transformational multipurpose space with 1,970 sq. ft., pantry, bar, office, and AV systems  
**Engage Room.** Breakout space for conferences, classes, meetings, banquets  
**Connect Room.** Breakout space for conferences, classes, meetings, banquets  
**Pool Deck.** Open-air environment for events and fun-in-the-sun activities  
**Rooftop Garden.** Living urban playscape to stage alfresco celebrations and movies under the stars  
**Solarium.** Adults-only sanctuary with a pool, hot tub, and protective glass roof  
**The Theatre.** Venue for your large conferences and presentations and our Broadway-caliber shows  
**More venues.** The Basement on 2. Camp at Sea on 3. Casino, Celebrity iLounge<sup>SM</sup>, and Photo Studio/Gallery on 4. Onboard shops on 4 and 5. Art Gallery on 5. Edge Cabanas and The Spa on 14. Fitness Center on 15. Jogging track on 16.

DECK	CAPACITY	PRIVATE
2	100	Yes
4, 5, 6	325	Yes
4	200	Yes
4	93	Yes
4	76	Yes
14	1,000	Part
15	270	Yes
14	161	Yes
3, 4, 5	900	Yes

\* Lunch is available on sea days. Nominal fee is charged for room service late at night. Le Petit Chef™ at Le Grand Bistro has a \$55 cover charge for dinner. Conference-room capacities assume setups with chairs; other layouts are available. The Theatre can accommodate additional chairs to increase capacity.





The Meeting Place



The Grand Plaza



Destination Gateway



Rooftop Garden